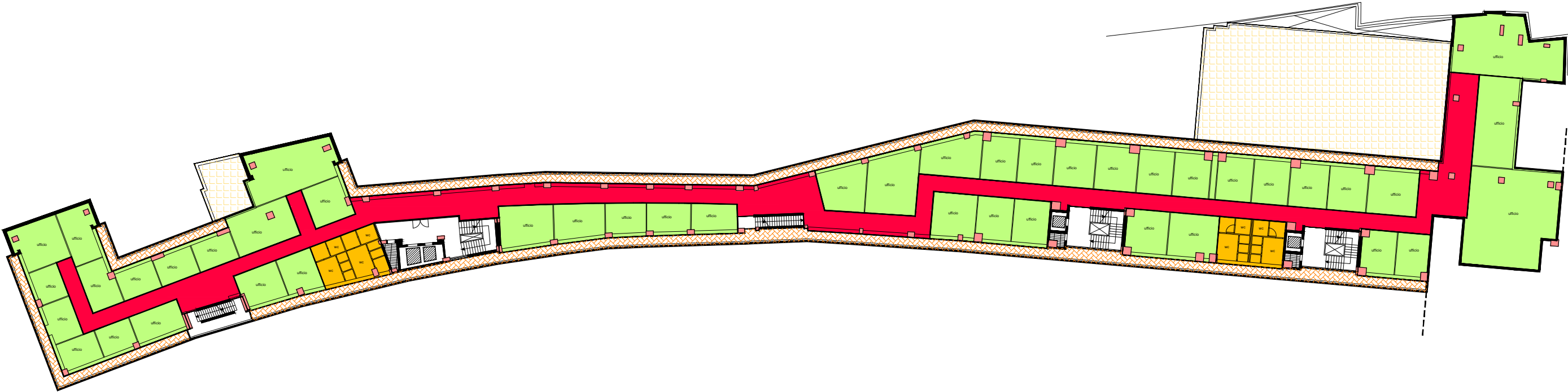




RAGUSA CENTRO

PIANO PRIMO VIA MONS. A. RIZZO
(PIANO A QUOTA 517,35)

3



	UFFICI TRIBUNALE	mq	1.372,20
	CORRIDOI	mq	505,91
	WC	mq	89,96
	BALCONI CHIUSI	mq	410,17
	SPAZIO ESTERNO	mq	439,88